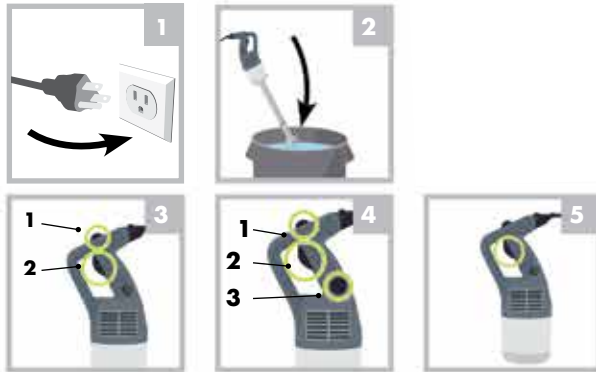




## Switching on and using the mixer

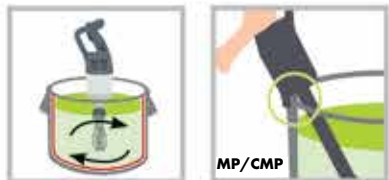
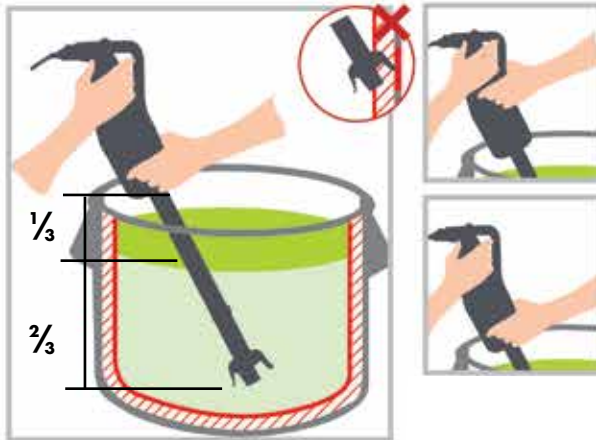
**⚠ Do not use the mixer unless the blade or whisk is fully immersed**



MANUAL CONTROL

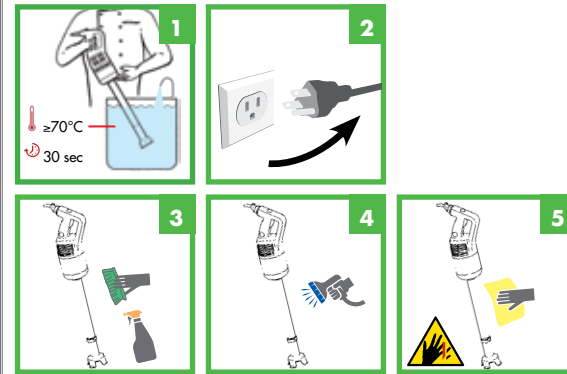
CONTINUOUS OPERATION

STOP

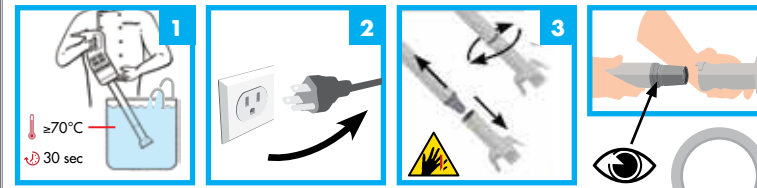


## Cleaning, maintenance and storage

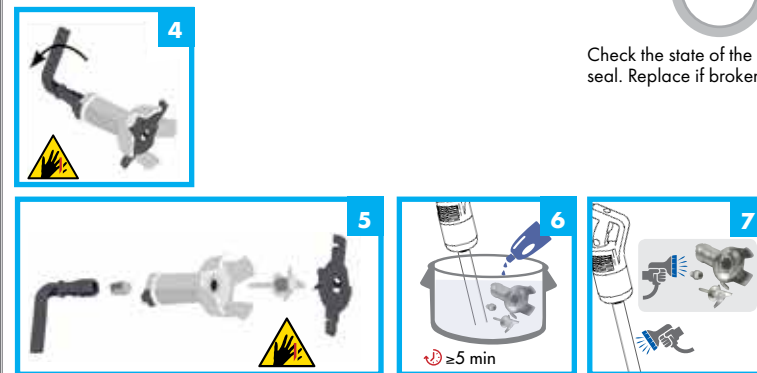
After each use



At the end of the day

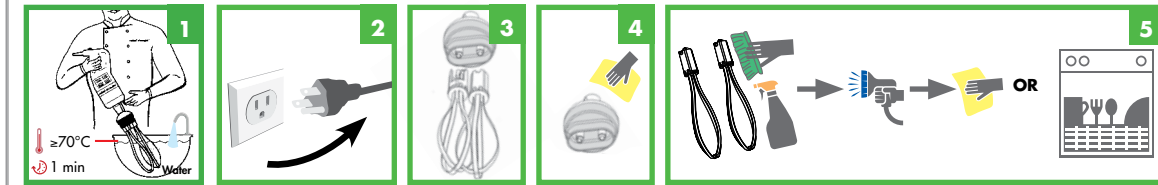


Check the state of the seal. Replace if broken

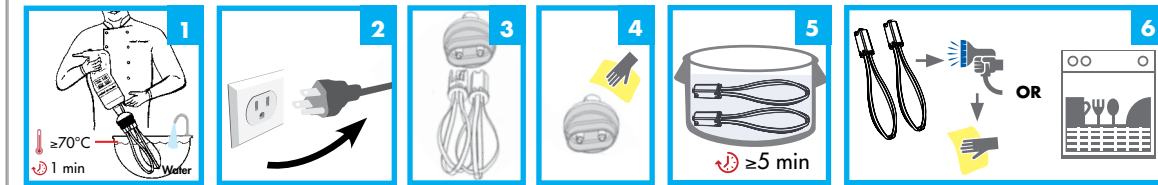


## WHISK

After each use



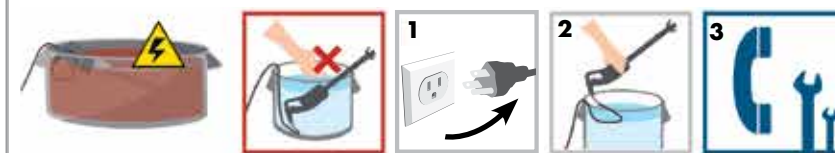
At the end of the day



## Safety and Warnings



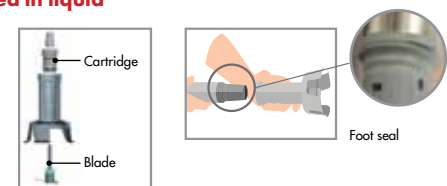
## In case of immersion



**⚠ Do not use the appliance after the motor unit has been immersed in liquid**

## MAINTENANCE

Replace the cartridge/bearing, the blade and foot seal, or sooner if required.



Foot seal